

ELSAG® COVERT RADAR TRAILERS & VARIABLE MESSAGE BOARDS

LEONARDO TURNS RADAR TRAILERS AND VARIABLE MESSAGE BOARDS INTO ELSAG® PLATE HUNTER ALPR SYSTEMS

Get the benefits of speed monitoring or variable messaging and automatic license plate recognition (ALPR) in one mobile solution. Leonardo transforms a standard radar trailer or variable message board into powerful covert tools that identify license plates connected to auto theft, child predators, warrants, speeding, uninsured vehicles, revoked driving privileges, parolees, etc.

As cars pass by an ELSAG® Plate Hunter Covert Radar Trailer or Variable Message Board, ALPR cameras read each license plate, then instantaneously compares it to law enforcement plate number hot lists.

If the ELSAG ALPR system reads a license plate included on a hot list, audible and visual alarms are broadcast instantaneously to a command center and to nearby officers for real-time interdiction. Information associated with each alarm—license plate number, photo of the car, date/time stamps and GPS coordinates of the read location—can be stored on the ELSAG Enterprise Operations Center™ data management server for future query and analysis at any time to aid investigations. Leonardo's ELSAG Plate Hunter Covert Radar Trailers and Variable Message Boards can help your agency work more efficiently by fully focusing on identifying suspect vehicles and gathering criminal intelligence, 24/7.

Variations Of ELSAG® Plate Hunter Radar Trailers & Variable Message Boards To Fit Your Specific Law Enforcement Needs

SPEED PATROL 18 140301B, 140302B

Comprised of a radar trailer with a two-digit 18" LED display, approach only K-Band radar, three 100AH batteries with a 30A battery charger, 50-watt solar package, ELSAG® ALPR camera with an onboard brick PC, network switch, power conditioner and cellular modem mounting position (modem optional). One or two-camera systems available.

COMPONENTS

411256 Trailer
421752 LPR Kit
421924 F3 35mm 12VDC Camera
210003 Labor
413297 Power Cable
413223 Ethernet Cable

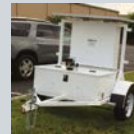


SPEED PATROL 18 W/POCKET 140301P

Comprised of a radar trailer with a two-digit 18" LED display, approach only K-Band radar, three 100AH batteries with a 30A battery charger, 50-watt solar package, one or two ELSAG ALPR cameras built into a semi covert pocket with an onboard brick PC, network switch, power conditioner and cellular modem mounting position (modem optional).

COMPONENTS

411256 Trailer
421752 LPR Kit
140031 M7 1 Camera system
210003 Labor



SPEED PATROL 18 W/POWER UPGRADE KIT 140301U, 140302U

Comprised of a radar trailer with a two-digit 18" LED display, approach only K-Band radar, four 200AH batteries with a 40A four-bank battery charger, 200-watt solar package, ELSAG ALPR camera with an onboard brick PC, network switch, power conditioner and cellular modem mounting position (modem optional). One or two-camera systems available.

COMPONENTS

411256 Trailer
421752 LPR Kit
421924 F3 35mm 12VDC Camera
421753 Power Upgrade
413297 Power Cable
413223 Ethernet Cable



MESSAGE BOARD 3 LINE FULL SIZE 1 CAMERA 140335

Full 23" 76" x 126" Case 27 x 48 Pixel, 480-watt solar array, MB2 - eight batteries, battery charger 45amp 115VAC 50/60 Hz, 2" ball coupler, one ELSAG ALPR camera, one ELSAG ALPR kit with onboard brick PC, network switch, power conditioner, cellular modem mounting position (optional cellular modem).

COMPONENTS

413010 Trailer
421880 FCU Low Power
421924 F3 35mm 12VDC Camera
413223 Ethernet Cable
210003 Labor
413297 12VDC Power Cable



SOLAR TOWER SPPT-3000

Solar Tech 30' Tower: 320-watt solar array, eight standard batteries, battery charger 45amp 115VAC 50/60 Hz, 2" ball coupler, one ELSAG ALPR camera, one ELSAG ALPR kit with onboard brick PC, extended camera cable for tower, network switch, power conditioner, cellular modem mounting position (modem optional).

COMPONENTS

413091 Trailer
421924 F3 35mm 12VDC Camera
421880 Field Control Unit Low Power
421879 Remote Pan Tilt System
413223 Ethernet Cable
413297 Power Cable

DIESEL HYBRID TOWER

Wanco 30' Telescoping Tower: 30-gallon tank provides up to 72 hours between refueling, 6Kw, 50A @ 120 VAC, up to four ELSAG ALPR cameras with full FCU, extended camera cable, (modem optional).

COMPONENTS

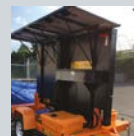
413092 Trailer
421880 FCU
421924 F3 35mm 12VDC Camera
413223 Ethernet Cable
421879 Remote Pan Tilt System
413297 Power Cable 12VDC

MESSAGE BOARD 3 LINE FULL SIZE COVERT 140332

ST Message Board: Full 23" 76" x 126" Case 27 x 48 Pixel, 480-watt solar array, MB2 - eight batteries, battery charger 45amp 115VAC 50/60 Hz, 2" ball coupler, two covert ELSAG ALPR cameras, one ELSAG ALPR kit with onboard brick PC, network switch, power conditioner, cellular modem mounting position (modem optional).

COMPONENTS

413010 Trailer
110183 Covert LPR
412725 Covert Box



MESSAGE BOARD 3 LINE FULL SIZE 2 CAMERA 140336

ST Message Board: Full 23" 76" x 126" Case 27 x 48 Pixel, 480-watt solar array, MB2 - eight batteries, battery charger 45amp 115VAC 50/60 Hz, 2" ball coupler, two AD3FH cameras with brackets, one full FCU with mounting brackets, 15' camera cables, cellular modem mounting position (modem optional).

COMPONENTS

413010 Trailer
421924 F3 35mm 12VDC Camera
413223 Ethernet Cable
421880 FCU Low Power
413297 Power Cable 12VDC

This publication is issued to provide outline information only and is supplied without liability for errors or omissions. No part of it may be reproduced or used unless authorized in writing. We reserve the right to modify or revise all or part of this document without notice. 2020 © Copyright Selex ES Inc., a Leonardo Company

For more information please email:
info@leonardocompany-us.com

4221 Tudor Lane
Greensboro, NC 27410
Tel: 1 (877) 773.5724
Outside the US: +1 (336) 379.7135

Made in the USA 

LEONARDO\US\040620

leonardocompany-us.com

