



LEONARDO CYBER & SECURITY SOLUTIONS

SC2

**SECURITY
MANAGEMENT
PLATFORM**





SC2 is Leonardo's security management platform designed to provide a central interface for personnel to address security management, command & control, situational awareness, and resilience. It is a critical tool for aiding the security of:

- **Critical national infrastructures (ports, airports, railways)**
- **Energy and utilities**
- **Enhanced situation awareness**
- **Cities and territories**
- **Major events**

Security challenges increase more and more for critical infrastructure, industries, cities and territories. SC2 helps security personnel more effectively address a determined threat by collecting and combining relevant information from heterogeneous systems, so appropriate actions within standard operating procedures can be implemented.

Based on the Observe, Orient, Decide Act (OODA) methodology and built on a robust Service Oriented Architecture (SOA) using a Web Services organization, SC2 supports a wide range of proactive and reactive security measures to achieve strategic and tactical outcomes in an integrated security vision.

INTEGRATION OF HETEROGENEOUS SOURCES

SC2 is a comprehensive platform able to manage information from multiple systems to provide a single point of view for all operations. This integrated control center provides security authorities with the awareness to quickly assess and proactively respond to a situation before it escalates to a serious security incident. SC2 uses Enterprise Service Bus (ESB) architecture to integrate subsystems ranging in complexity.

DATA ACQUISITION & CORRELATION

SC2's innovative method of integrating and correlating heterogeneous information provides a clearer picture of security-related conditions, allowing security personnel to identify potential threats that would otherwise be hard to detect.

EVENT MANAGEMENT

Thanks to a Complex Event Processing (CEP) rules-based engine, SC2 can use information generated by various subsystems to define relationships among heterogeneous events, even if apparently unrelated, to generate new entities, new alarms (smart alarms) or identify possible false alarms.



WORKFLOW CONFIGURATION

SC2's workflow engine is extremely effective for the security management of critical infrastructures. Through an easy-to-use graphical interface, it is possible, for example, to introduce into the system all the encoded processes (SOP-Security Operating Procedures) that implement the security plan for a specific asset. In this way the system can ensure that the actions taken in response to alarm events are always linked to a codified process related to that specific event.

CARTOGRAPHY AND GEO-REFERENTIATION

The integrated management of cartography gives SC2 users a geo-reference view of all the resources and information in the system, making it possible to understand situations and determine possible actions to proactively address them. SC2 cartography is GeoServer-based and is fully compliant with Open Geospatial Consortium (OGC) standards, such as Web Feature Service (WFS) and Web Coverage Service (WCS).

COMMUNICATION INTEROPERABILITY

SC2 supplies complete integration with professional radio systems, leveraging Leonardo's communications interoperability platform. Narrowband technologies (TETRA, DMR) and broadband technologies (Wi-Fi, LTE) can be used to exchange data with the system and coordinate in-field resources.

RESOURCE MANAGEMENT

Sophisticated resource management allows the identification, visualization tracking and administration of sensors, cameras, radio terminals and security officers.

FEDERATION

Multiple instances of SC2 can be hierarchically structured federations allowing alarm escalation and, in general, more flexibility in security management.

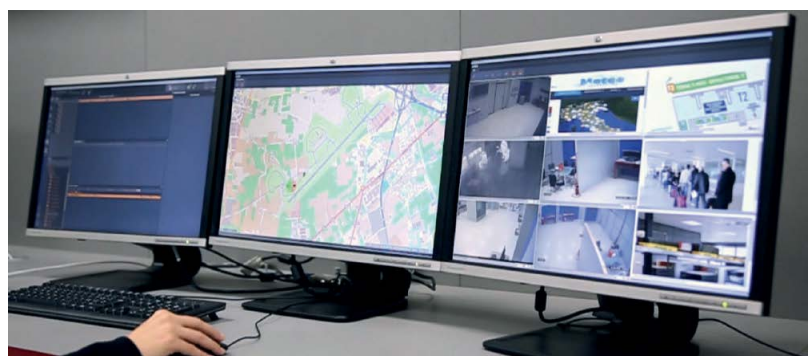
INTELLIGENT VIDEO MANAGEMENT

SC2 provides native video management functions of ONVIF-based cameras including recording and investigation capabilities. Third-party video management systems can be integrated, as well. Video analysis capabilities are included (either on the camera or the server) making it possible to implement SEVERAL algorithms applicable to different business domains. OCR for license plate number and face recognition are examples of existing integrations.

SC2 is closely integrated with Ganimede, the Leonardo AI-based video/audio analysis platform. Video analysis generated alarms and events can be collected and managed according to SC2 workflows. Algorithm settings, as well as algorithms-to-camera associations, can be performed easily, leveraging the SC2 graphical user interface.

ENTERPRISE DATA MANAGEMENT

Data and multimedia content can be securely exchanged by the integration of a secure data management function that can trigger events and be part of an SC2 workflow to increase operational effectiveness.



Events Management (left), GIS & Cartography (center), Data/Info Resources (right)

PRESENTATION

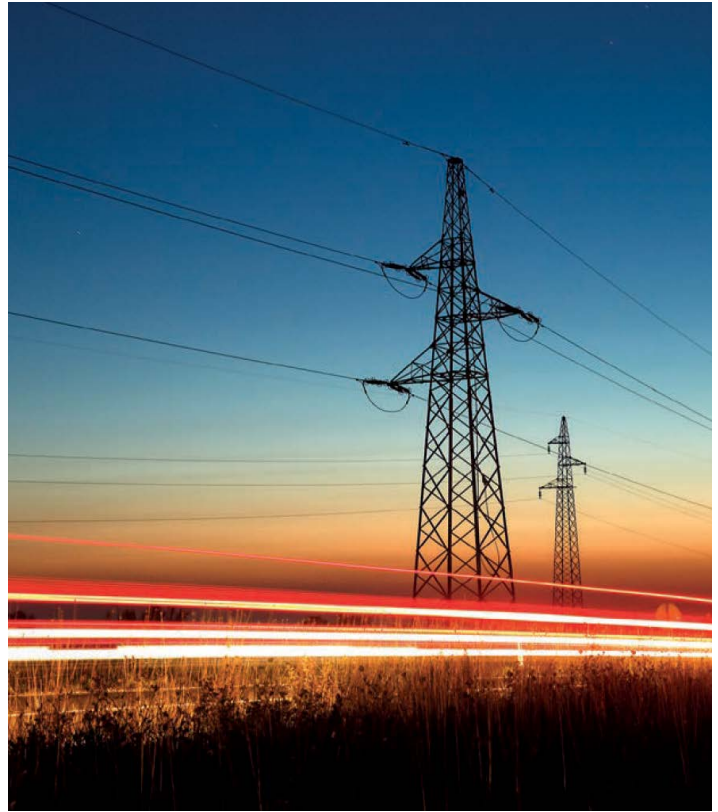
The presentation layer is entirely based on web technologies. This guarantees a greater simplicity in the distribution of applications and, above all, providing more flexible accessibility to all content. The typical client configuration features three monitor workstations. Videowall, tablet and flat multi-touch monitor (tactical table) client configurations are also available.

APPLICATION DOMAINS

SC2 delivers a versatile approach to meeting the diverse security needs across various sectors, offering a comprehensive solution tailored to address specific demands:

- Sensors and subsystems management
- Sophisticated events and alarms management
- Enhanced situation awareness
- Automation in response
- Workforce coordination

SC2 flexibility allows different types of installations including deployable and mobile configurations. High Availability (HA) characteristics may be exploited using software redundancies and virtual architecture features.



For more information:
info@leonardocompany-us.com

 Made in the USA

[REQUEST MORE INFO HERE >](#)

leonardocompany-us.com/lpr

This publication is issued to provide outline information only and is supplied without liability for errors or omissions. No part of it may be reproduced or used unless authorized in writing. We reserve the right to modify or revise all or part of this document without notice.

2024 © Copyright Leonardo US Cyber and Security Solutions, LLC is a Leonardo company.
LEO/US/100124

